

Probing Nitrogen-Sensitive Steps in the Free-Radical-Mediated Deamination of Amino Alcohols by Ethanolamine Ammonia-Lyase

Russell R. Poyner, Mark A. Anderson, Vahe Bandarian,[‡] W. Wallace Cleland, and George H. Reed*

Department of Biochemistry, Enzyme Institute, University of Wisconsin, 1710 University Avenue, Madison, Wisconsin 53726

Received January 30, 2006; E-mail: reed@biochem.wisc.edu

The bacterial enzyme, ethanolamine ammonia-lyase (EAL, EC 4.3.1.7), catalyzes the adenosylcobalamin (AdoCbl)-dependent deamination of ethanolamine or 2-aminopropanols to ammonia and the corresponding aldehyde.¹ The reaction is one of several 1–2 radical rearrangements/eliminations catalyzed by AdoCbl-dependent enzymes.^{2–4} The paradigm for these reactions is an interchange of a group at C2 and a hydrogen atom at C1. With the exception of glutamate mutase,⁵ mechanistic details of the migration steps in the AdoCbl-dependent enzymes are not well understood.³ The EAL reaction can be considered as a C2 → C1 migration of ammonia, followed by decomposition of the product carbinolamine (Scheme 1).¹

Migration of ammonia to C1 is not strictly required to form acetaldehyde.⁶ The migration mechanism has been demonstrated in the related enzyme dioldehydrase and derives some support from stereochemistry.⁷ Computational studies have indicated that both an internal migration of ammonia or direct elimination are energetically feasible.^{6,8}

The mechanism includes two H atom abstraction steps that are energetically demanding. Isotopes of H have been used to determine the contributions of these H atom transfers to the overall rate.¹ Transfer of ³H from the 5' position of AdoCbl to acetaldehyde during turnover shows an isotope effect (IE) of ~100.⁹ Deuteration of carbon 1 of ethanolamine results in a IE on cob(II)alamin formation (carbon–cobalt bond cleavage) of > 10 in the pre-steady state.¹⁰ The observation of a deuterium KIE on carbon–cobalt bond cleavage is evidence that this step is kinetically coupled to H atom transfer.¹¹ The large hydrogen IE's observed with EAL and other AdoCbl-dependent enzymes have been attributed to hydrogen tunneling.^{4,12} The steady-state IE on V_{\max} for [1-²H₂]-ethanolamine is ~6.^{9,13} For (S)- and (R)-2-aminopropanol, the ^DV's are both ~5.¹⁴ Attenuation of the ²H IE in the V_{\max} suggests that H-insensitive steps in the reaction contribute to limiting of the rate. For example, V/K for the EAL reaction is sensitive to external magnetic fields, suggesting that radical pair formation or recombination steps are reflected in V/K .¹⁵ The contribution to V/K of C–N bond-breaking and -making steps in the mechanism has not been measured. To assess the contribution of C–N bond-breaking and -making to V/K of the EAL reaction, we measured ¹⁵N IE's on the deamination reaction using ethanolamine, (R)-2-aminopropanol, and (S)-2-aminopropanol as substrates. These three substrates provide a range of 3 orders of magnitude in V/K (see Table 1).

Salmonella typhimurium EAL was overexpressed in *E. coli* and purified essentially as described previously.¹⁶ EAL reactions were run either to completion or to ~50% completion, quenched by addition of HCl, and EAL was removed by ultrafiltration (see Supporting Information). The ammonia generated was steam distilled¹⁷ and analyzed by isotope ratio mass spectrometry.¹⁸

Scheme 1. EAL Reaction—Carbinolamine Intermediate

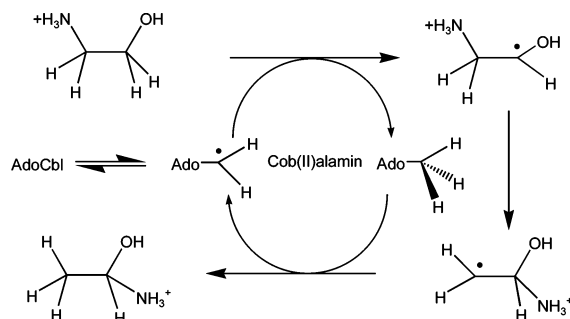


Table 1. EAL Kinetic Parameters

substrate	K_m (μ M)	k_{cat} (s^{-1})
ethanolamine	1.9 ± 0.2	30 ± 1
(R)-2-aminopropanol	9 ± 2	0.067 ± 0.001
(S)-2-aminopropanol	0.80 ± 0.06	0.12 ± 0.01

Table 2. ¹⁵N Isotope Effects on EAL

substrate	¹⁵ (V/K)	n^a
ethanolamine	1.0017 ± 0.0004	7
(R)-2-aminopropanol	1.0012 ± 0.0002	3
(S)-2-aminopropanol	1.0055 ± 0.0002	3

^a Number of determinations.

Fractional reaction was determined by a coupled assay for ammonia using glutamate dehydrogenase.¹⁹ Isotope effects were calculated using eq 1:

$$\text{IE} = \log(1 - f)/\log(1 - fR_p/R_o) \quad (1)$$

where f is the fractional extent of reaction, R_o is the ¹⁵N/¹⁴N ratio of the starting substrate determined by 100% conversion to product ammonia, and R_p is the ¹⁵N/¹⁴N ratio for the product after partial conversion. K_m 's and k_{cat} 's for the three substrates were measured in 10 cm path length cuvettes using a coupled assay with alcohol dehydrogenase.

All three of the substrates tested gave measurable, normal ¹⁵N IE's. For ethanolamine and (R)-2-aminopropanol, the effects are on the order of 0.1%. For (S)-2-aminopropanol, the effect is nearly 5 times larger at 0.5% (Table 2).

Cleland and co-workers have determined intrinsic ¹⁵N IE's in excess of 3% for enzyme-catalyzed polar reactions.²⁰ Assuming that intrinsic ¹⁵N IE's for radical reactions are similar to their polar equivalents, then it is clear that the ¹⁵N IE's measured here are significantly attenuated by other steps in the catalytic cycle.

There are two steps in the reaction that can give rise to ¹⁵N IE's—the rearrangement of substrate radical and the elimination of ammonia from the carbinolamine. EPR measurements on radical

[‡] Current address: Department of Biochemistry and Molecular Biophysics, University of Arizona, Tucson, AZ 85721-0088.

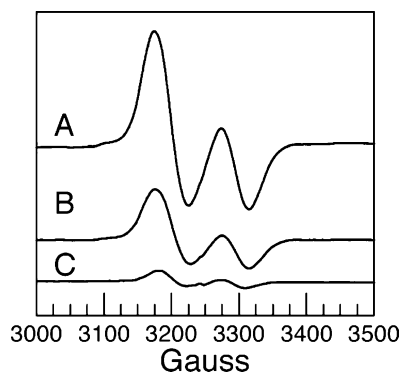


Figure 1. EPR spectra of steady-state 2-aminopropanol radicals at the active site of ethanolamine ammonia-lyase. Ethanolamine ammonia-lyase and adenosylcobalamin were mixed with 2-aminopropanol and frozen by dipping in liquid nitrogen. (A) (*S*)-2-aminopropanol. (B) (*R*)-2-aminopropanol. (C) [$1\text{-}^2\text{H}_2$]-(*R*)-2-aminopropanol. Spectra were recorded at 77 K. The ordinate is scaled such that amplitudes are proportional to concentration. Samples contained 0.24 mM enzyme, 0.47 mM adenosyl-cobalamin, 25 mM 2-aminopropanol, and 0.01 M HEPES/NaOH pH 7.5.

intermediates can provide some insight into which steps are rate limiting. When reaction mixtures are frozen in the steady state, the dominant radical species will be the intermediate just prior to a slow step. For (*S*)-2-aminopropanol, the EPR spectrum is that of the initial substrate radical, and the intensity of the signal is consistent with $\sim 90\%$ of the enzyme being present in the radical form.²¹ This steady-state buildup of the substrate radical intermediate just prior to the radical rearrangement suggests that the rearrangement is a slow step in the reaction with (*S*)-2-aminopropanol. The ^{15}N IE of 0.5% for (*S*)-2-aminopropanol is less than expected for the intrinsic IE on the C–N bond breaking. This result suggests that, although the ^{15}N -sensitive steps contribute to V/K , other steps in the catalytic cycle must also contribute. Samples frozen in the steady state with (*R*)-2-aminopropanol give essentially the same EPR spectrum as that of (*S*)-2-aminopropanol. However, the signal intensity (double integral) with (*R*)-2-aminopropanol is about half that of (*S*)-2-aminopropanol. Moreover, the intensity of the EPR signal drops another 5-fold when [$1\text{-}^2\text{H}_2$]-(*R*)-2-aminopropanol (prepared from D-alanine as described previously)²¹ is the substrate (Figure 1).

The intensity of EPR signals of samples made up with [$1\text{-}^2\text{H}_2$]-(*S*)-2-aminopropanol is the same as that of the unlabeled sample (not shown). The balance between formation and breakdown of the radical determines its steady-state level. The lower amount of radical with (*R*)-2-aminopropanol and the sensitivity of the steady-state radical concentration to deuteration at C1 suggest that the initial hydrogen atom abstraction is at least comparable in rate to the subsequent steps including ^{15}N -sensitive ones. The large $D(V/K)$ (~ 20) reported for the enzyme from *Clostridium* supports the notion that H atom abstraction is significantly rate limiting for (*R*)-2-aminopropanol.²² Rate limitation by H atom abstraction can account for the lower [compared to (*S*)-2-aminopropanol] ^{15}N IE for (*R*)-2-aminopropanol.

For ethanolamine, the spectrum is dominated, not by the substrate radical, but by a product, or product-related radical.²³ The observation of a product-related radical for ethanolamine in the steady state suggests that steps subsequent to the formation of the product radical are slower than the ^{15}N -sensitive steps in the catalytic cycle—a scenario consistent with the observation of a small ^{15}N IE.

These results show that the relative heights of kinetic barriers encountered by the three substrates differ such that intermediates corresponding to different stages of the reaction or their steady-state levels differ (see Supporting Information). ^{15}N -sensitive steps make a significant contribution to V/K with (*S*)-2-aminopropanol.

Acknowledgment. This work was supported by NIH Grants GM35752 (G.H.R.) and GM18938 (W.W.C.). The authors acknowledge helpful discussions with Steven Mansoorabadi.

Supporting Information Available: Sample preparation for isotope ratio mass spectrometry, further discussion of barrier heights. This material is available free of charge via the Internet at <http://pubs.acs.org>.

References

- (1) Bandarian, V.; Reed, G. H. *Ethanolamine Ammonia-Lyase*. In *Chemistry and Biochemistry of B₁₂*; Banerjee, R., Ed.; Wiley-Interscience: New York, 1999; pp 811–833.
- (2) (a) Banerjee, R.; Ragsdale, S. W. *Annu. Rev. Biochem.* **2003**, *72*, 209–247. (b) Toraya, T. *Chem. Rev.* **2003**, *103*, 2095–2128. (c) Reed, G. H. *Curr. Opin. Chem. Biol.* **2004**, *8*, 477–483.
- (3) Banerjee, R. *Chem. Rev.* **2003**, *103*, 2083–2094.
- (4) Marsh, E. N. G.; Drennan, C. L. *Curr. Opin. Chem. Biol.* **2001**, *5*, 499–505.
- (5) Chih, H.-W.; Marsh, E. N. G. *J. Am. Chem. Soc.* **2000**, *122*, 10732–10733.
- (6) Semialjac, M.; Schwartz, H. *J. Am. Chem. Soc.* **2002**, *124*, 8974–8983.
- (7) (a) Reteý, J.; Umani-Ronchi, A.; Seibl, J.; Arigoni, D. *Experientia* **1966**, *22*, 502–503. (b) Reteý, J.; Suckling, C. J.; Arigoni, D.; Babior, B. M. *J. Biol. Chem.* **1974**, *249*, 6359–6360.
- (8) Wetmore, S. D.; Smith, D. M.; Bennett, J. T.; Radom, L. *J. Am. Chem. Soc.* **2002**, *124*, 14054–14065.
- (9) Weisblat, D. A.; Babior, B. M. *J. Biol. Chem.* **1971**, *246*, 6064–6071.
- (10) Bandarian, V.; Reed, G. H. *Biochemistry* **2000**, *39*, 12069–12075.
- (11) Marsh, E. N. G.; Ballou, D. P. *Biochemistry* **1998**, *37*, 11864–11872.
- (12) Banerjee, R. *Biochemistry* **2001**, *40*, 6191–6198.
- (13) (a) Babior, B. M. *J. Biol. Chem.* **1969**, *244*, 449–456. (b) Graves, S. W.; Fox, J. A.; Babior, B. M. *Biochemistry* **1980**, *19*, 3630–3633.
- (14) Bandarian, V. *Radical Enzymology of Coenzyme B₁₂-Dependent Ethanolamine Ammonia-Lyase*. Ph.D. Thesis, University of Wisconsin, Madison, 1998.
- (15) (a) Harkins, T. T.; Grissom, C. B. *Science* **1994**, *263*, 958–960. (b) Taoka, S.; Padmakumar, R.; Grissom, C. B.; Banerjee, R. *Bioelectromagnetics* **1997**, *18*, 506–513.
- (16) Bandarian, V.; Reed, G. H. *Biochemistry* **1999**, *38*, 12394–12402.
- (17) Hermes, J. D.; Weiss, P. M.; Cleland, W. W. *Biochemistry* **1985**, *24*, 2959–2967.
- (18) (a) Rishavy, M. A.; Cleland, W. W.; Lusty, C. J. *Biochemistry* **2000**, *39*, 7309–7315. (b) Snider, M. J.; Reinhardt, L.; Wolfenden, R.; Cleland, W. W. *Biochemistry* **2002**, *41*, 415–421.
- (19) Kaltwasser, H.; Schlegel, H. G. *Anal. Biochem.* **1966**, *16*, 132–138.
- (20) Wright, S. K.; Rishavy, M. A.; Cleland, W. W. *Biochemistry* **2003**, *42*, 8369–8376.
- (21) Bandarian, V.; Reed, G. H. *Biochemistry* **2002**, *41*, 8580–8588.
- (22) Babior, B. M. *Ethanolamine Ammonia-Lyase*. In *B₁₂*; Dolphin, D., Ed.; John Wiley & Sons: New York, 1982; Vol. 2.
- (23) (a) Warncke, K.; Schmidt, J. C.; Ke, S.-C. *J. Am. Chem. Soc.* **1999**, *121*, 10522–10528. (b) Warncke, K.; Canfield, J. M. *J. Am. Chem. Soc.* **2004**, *126*, 5930–5931.

JA060710Q